



unicef 
for every child



Giga: Connecting every school in the world to the Internet

September 2024

Giga's mission is to **connect every school in the world to the Internet by 2030** and every young person to **information, opportunity and choice.**



How Giga Works



Map the location of schools and monitor school connectivity status in real-time



Model the infrastructure and investments needed to deliver school connectivity



Support governments to build the right-layered **financing** to pay for connectivity



Help governments to **contract** connectivity for schools



Supports **convening and governance** of all stakeholders relevant to school connectivity

Connectivity helps power education



**Enhanced
Learning**

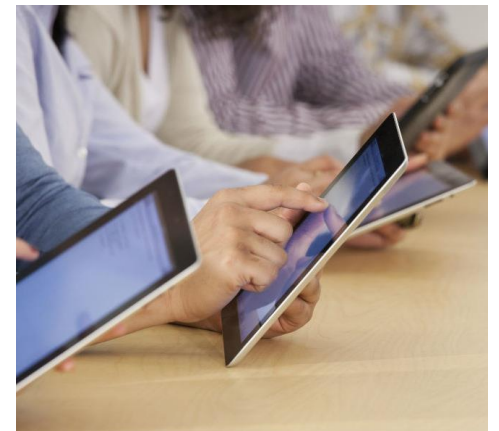
**Teacher
Efficiency**

**Real-time
Monitoring**

**Cost
Efficiency**

**Inclusive
Education**

**Lifelong
Learning**



CURRENT SITUATION

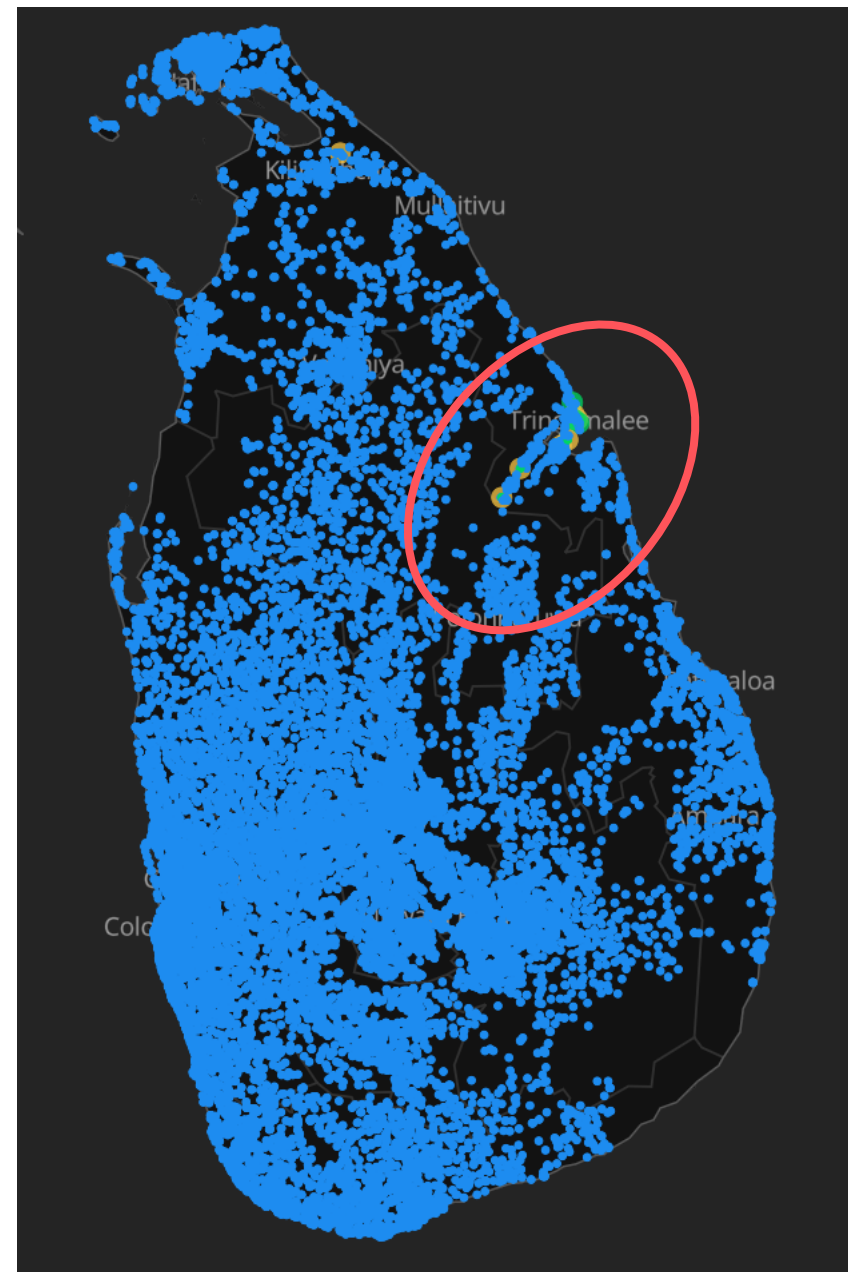
School status

- ✓ ● Connected 10
- ✓ ● Not connected 0
- ✓ ● Unknown 15.6K

Average Download Speed

Global Benchmark - 20Mbps

- ✓ ● Good 3
- ✓ ● Moderate 7
- ✓ ● Bad 0
- ✓ ● Unknown 0



MAPPED SCHOOLS IN SRI LANKA

SAMPALTIVU TAMIL MAHA VIDYALAYAM

8.632800102233887,
81.21538543701172

45.25 Mbps

Go to School page →

JAMALIYA MUSLIM MAHA VIDYALAYAM

8.592620849609375,
81.2199935913086

2.54 Mbps

Go to School page →



School
status



Real-time
Connectivity



Cellular
Coverage

Real-time data helps improve efficiency of
resource planning



giga.global



@gigaglobal



@giga_global



unicef
for every child

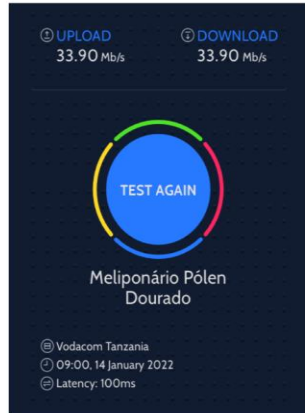




VIWE THE MAP

GigaMaps

Installation Process

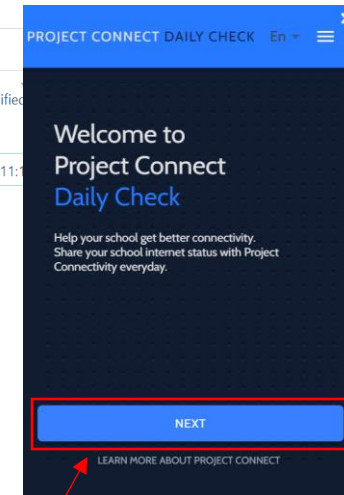
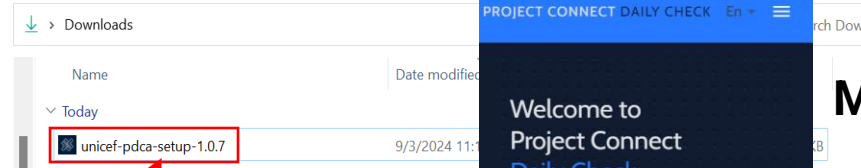


Project Connect Daily Check Application

Help your school get better connectivity. Share your school's internet status with Project Connect every day.

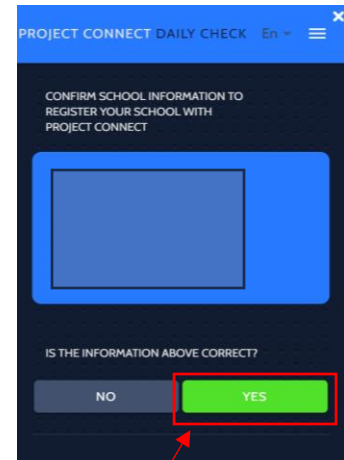
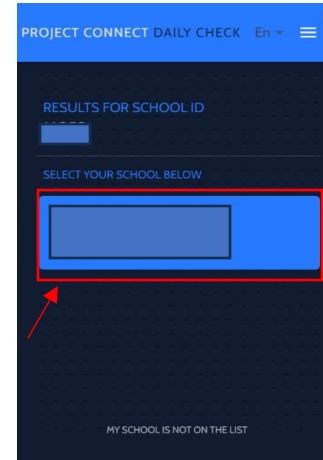
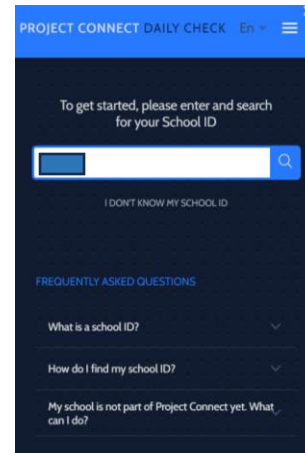
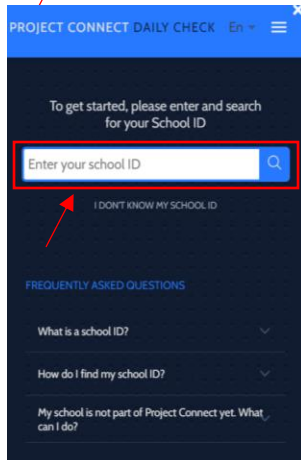
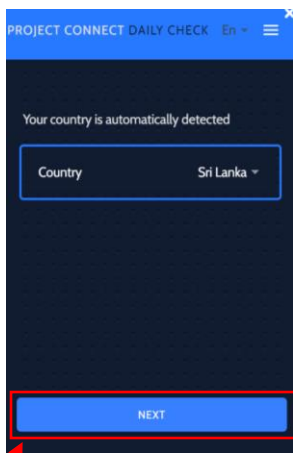
- Checks school internet connection
Every day, Daily Check automatically performs a short test using minimal data, to determine the quality and speed of your school's network.
- Uploads results to public database
The results are uploaded to Project Connect's Open Data platform to provide an accurate picture of your school's location and network quality over time.
- Provides key information to stakeholders
This information helps government and organisations focus resources to improve your school's internet connection.

DOWNLOAD 123MB. Windows OS only



Minimum system requirements:

- An **internet connection**
- A **Windows desktop or laptop computer permanently and exclusively connected to the school internet.**
- Installed operating system of **Windows 7 or higher**
- 500 Mb of free disk space





Monitoring the quality of internet service in schools

Internet QoS data visualized on Project Connect allows the **tracking of progress and quality of connectivity** of schools over time and improve **accountability and transparency**.

Brazil: each dot represents a school, and it is colored based on its level of connectivity. The map is refreshed every few hours.

Infrastructure mapping and analysis



Infrastructure mapping

Mapping existing ICT infrastructure.



Infrastructure analysis

Analysing the gaps in the current infrastructure to connect schools and communities.



Infrastructure planning & Simulation

Simulate future network design based on input on technology, budget and priorities.



Investment and operational modelling

Business modelling based on network design.

Next Steps in Giga Sri Lanka

- **Meeting with key focal points at the MoE:**
 - With the Director of ICT Infrastructure Development about the installation process of the app.
 - With Dr. Munagama, the Additional Secretary (Information Technology & Digital Education) to get the support of Information Technology branch of MoE
 - With the Information Technology Branch about the installation process of the app.
 - With the Distance Learning Department about the installation process of the app.
- **Meeting with Provincial ICT Teams:**
 - Coordinate a meeting with Provincial ICT and Data coordinators to introduce GIGA.
 - Establish a communication channel for ongoing support and updates.
- **Meeting with Ministry of ICT:**
 - Coordinate a meeting to brief the Ministry of ICT on the GIGA project.
 - Regarding the Letter of Interest and the Data Sharing Approval Letter.

Next Steps in Giga Sri Lanka

- **Procedure Document:**
 - Share detailed installation procedure with images to guide the installation process.
- **App Installation Support:**
 - Zonal ICT infrastructure teams to assist schools with app installation on school-based computers.
 - Provide training to school IT coordinators for future installations.
 - Monitor the app installation



Canada

United States

Mexico

Cuba

Venezuela

Colombia

Ecuador

Brazil

Peru

Paraguay

Chile

Uruguay

Argentina

United Kingdom

Denmark

Belarus

Poland

Ukraine

Romania

Spain

Italy

Greece

Turkey

Morocco

Tunisia

Algeria

Libya

Egypt

Saudi Arabia

Oman

Yemen

Mauritania

Mali

Niger

Chad

Sudan

Ethiopia

Somalia

Tanzania

Maldives

Sri Lanka

China

India

Bangladesh

Malaysia

Philippines

Indonesia

South Korea

Japan

India

China

India

China

India

China

India

China

India

China

India

China

India

China

India

China



THANK YOU